



**MISSISSIPPI STATE**  
UNIVERSITY™

## EXTENSION

Our office is located in the Neshoba County coliseum on Hwy 15N in Philadelphia. We are open Monday-Friday, 8-5 p.m.

601-656-4602 & 601-656-4011

[k.benson@msstate.edu](mailto:k.benson@msstate.edu)

[bert.gilmore@msstate.edu](mailto:bert.gilmore@msstate.edu)



Neshoba County Extension Service

## FARM, FAMILY & 4H IN NESHOBA COUNTY

September - October



### August 30

#### Private Well Owner Network

Water Sample Drop- Off

9 a.m. – 4:30 p.m.

Workshop begins at 6 p.m.

Multi – Purpose Room

Neshoba County Coliseum

Registration is required for free water testing

### September 8 & 15

Fresh Market @ the Depot

7:00 a.m. til noon

Farmers' market, specialty foods, fall arts & crafts

Downtown Philadelphia – CDC parking lot

### September 13

#### Four Seasons of Floral Design

Make –N – Take: Fall Swag

9:00 a.m. - noon

Multi-Purpose Room

Pre-Registration is required

### September 13

#### Pesticide Applicator Training

4:00- 6:00 p.m.

Multi-Purpose Room

Pre-registration is required

### October 4<sup>th</sup>

#### Fall Forestry Association Meeting

6:00 p.m.

Neshoba County Coliseum

From the Desk of:

*Karen C. Benson*

Karen Benson, Extension Agent

*Bert Gilmore*

Bert Gilmore, Extension Agent



### Private Well Owner Network

Pre-register for the workshop online:  
[gcd.msucare.com/register](http://gcd.msucare.com/register)

Or call to register: 662-325-1788

Well owners can attend the workshop, just get their water screened, or do both but registration is required for a free water screening. Anyone planning to attend the workshop can bring their water sample with them.

The Mississippi Well Owner Network program is a free, educational training opportunity for Mississippi residents who depend on household wells for their water needs. It assists private well owners who want to be familiar with their groundwater resources, septic system maintenance, well maintenance, water quality, and water treatment. Water samples are tested for total coliform and E. coli bacteria for \$25. The first 45 water samples will be tested *FREE* – please be sure to register online or call to register for your free screening.

**Important:** For best results, pick up approved sample containers at the Extension office August 20-24 and August 27- 29.

There is no charge to attend the workshop at 6:00 p.m.

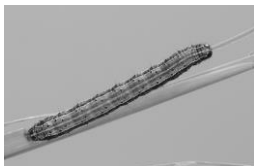
## Battle of the Bugs

As fall approaches, insects get fierce in forests and pastures. Dr. Blake Layton – Entomologist - has been battling insect pests for many years. You may find his strategies helpful.

**Yellowjackets:** One of the more effective and least confrontational methods is to use a disposable cup taped to a long stick to dump a tablespoon or so of insecticidal dust over the nest entrance and then just walk away and wait a day or two. The yellow jackets will track the insecticide into the nest as they come and go, eventually killing the colony. Some of the more effective dusts to use for this treatment contain acephate (Ortho Fire Ant Killer or Surrender Fire Ant Killer) or deltamethrin (Bengal UltraDust Fire Ant Killer, Terro Ant Dust or Delta Dust).

To locate the nest entrance, watch the insects come and go until you are sure you know where the entrance(s) is. Yellowjackets, are less likely to fly at night (European hornets are an exception), though they will fly toward a light if sufficiently agitated. Set the light on some inanimate object so that it lights the entrance and then approach from some other angle to apply the dust. So far, I have only used this method during the day and without protective clothing, by simply easing in from the side of the entrance (out of the flight path), dumping the insecticide over the entrance, and walking away before the insects sensed any disturbance. So far it has worked beautifully, but there may come a day....; choose your own risk level.

**Fall Army Worms:** Check hay fields two to three times per week. Check your sprayer and have it prepped and ready to go! Hay is expensive and insecticides are cheap.



**Treatment is recommended when populations exceed 3 caterpillars per square foot. Only count caterpillars that are 1/4 inch or longer**

**Medium range rates of pyrethroid insecticides work well on fall armyworms. Mustang Max at 1 gallon to 40 acres, or Karate Z at 1 gallon to 80 acres, are examples. Many dealers sell generic pyrethroids—be sure they are labeled for pastures**

- Bifenthrin is not labeled for use on hayfields or pastures!.
- Pyrethroids are restricted use products—buyers need a current private applicator card.
- Adding a growth regulator (Dimilin or Intrepid) to the pyrethroid will increase residual control
- Under heavy pressure it is not unrealistic to have to spray a cutting two, even three times.

**Keep on checking!**

## Mississippi Homemaker Volunteers 100 Years

The Dixon Homemaker Volunteers showcased the Centennial Celebration during the Neshoba County Fair in their Exhibit Hall booth. Peeking through the windows of the replica of a fair cabin, you can see the birthday party – a reminder of rural family life.



The Dixon Homemakers are known locally for their barn quilts and establishing the Red Clay Hills Barn Quilt Trail. The Philadelphia – Neshoba County Library hosts the webpage for the trail. To view the barn quilts and learn their locations, view: <http://www.neshobalibrary.net/redclayhillsbarnquilttrail.html>

*The history of America can be seen in the history of quilts. Stitched into these quilts is the rich heritage of thrifty self-sufficient women who helped homestead the land, the history of families sewn into quilts one patch or one stitch at a time, and the legacy of the art of quilting, passed on from generation to generation- Quilt Discovery Experience of America, 2018.*



The Autumn Star Barn Quilt is displayed on County Road 412.

Stars are one of the most common patterns used in quilting. Pioneers traveling west used the stars for guidance; and they looked upon stars as religious symbols of their faith in God.

The Dixon Homemaker Volunteers meet the first Wednesday of each month. They welcome any homemaker in the county. For more information, contact the Extension office.

# Exhibit Hall Winners

## Adult Winners

Total Exhibitors	96
Total Exhibits	2,465
Total Premiums Paid	\$10, 547.00

### Best of Show Ribbons

Willis Cumberland (2)	-	Fresh Fruits - Blueberries Squash
Kimberly Bozeman	-	Okra
Harvin Hudson	-	Peas
Mattie Hudson	-	Pepper
Ansley Hudson	-	Field Crops - Peanuts
Fannie Cumberland (2)	-	Food Preservation Five Jar Display Cultural Art - crochet
Doris Vowell	-	Quilts

### Top Blue Ribbon Winners

Diane Guthrie	-	100
Andrea Gardener	-	63
Fanny Cumberland	-	61
Abby Bowman	-	42
Cassidy Coleman	-	42

## Youth Winners

Total Exhibitors	240
Total Exhibits	1266
Total Premium Paid	\$5,071.00

### Best of Show Ribbons

Gracelea Bozeman	-	Fresh Fruits and Vegetables Running Okra
Gracelea Bozeman	-	Field Crops - Pumpkin
Harlee Neese	-	Food Preservation – Tomato Utility Pack
Grace Lea Bozeman	-	Poster - Gardening

### Top Blue Ribbon Winners

Dylan Kennedy	33 Blue Ribbons/ 39 Exhibits
Lauryn Smith	27 Blue Ribbons/ 44 Exhibits
Grace Lea Bozeman	26 Blue Ribbons/ 45 Exhibits
Jaydyn Roberson	23 Blue Ribbons/ 59 Exhibits
Ellie Breazeale	22 Blue Ribbons/ 57 Exhibits

## Four seasons of Floral Design

A series of workshops to learn the basics of floral design  
Create your own arrangement to take home  
Use Mississippi plant material & get tips to grow your own

### Fall Workshop: September 13

9 til noon

The Autumn Swag - \$15

*Principles of Design – Scale, Rhythm, Dominance*

Using dried accents and making bows



### Winter Workshop: December 5

9 til noon

The Boxwood Topiary - \$20

*Principles of Design: Harmony*

Using greenery to construct a 16 in. tabletop tree



**FLORAL**  
Enthusiast

Registration is required to order supplies: 601-656-4011  
All supplies and materials are furnished.

## Youth Livestock Exhibitors Excel in the Neshoba County Fair

### 1<sup>st</sup> Place Dairy Showmanship Winners

Landon Beason – 8-10 year olds  
 Helen Beason – 11-12 year olds  
 Hunter Beason – 13-15 year olds  
 Jonah Flake – 16-18 year olds



Congratulations to **Chandler Fortenberry** who has qualified for Mississippi's national archery team. He will compete in the National 4-H Shooting Sports Invitational in Grand Isle, Nebraska in June 2019 in compound archery.



Harlee Wilson had the 2<sup>nd</sup> Place Best of Show Bull



Caleb French had the Champion Santa Gertrudis Bull.

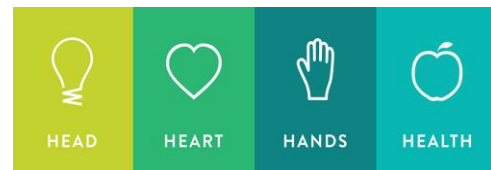


Brian Pace had the Grand Champion Senior Jersey.  
 Landon Beason had the Reserve Champion Senior Jersey.

The Neshoba County Dairy Exhibitors won the 1<sup>st</sup> Place County Herd.

### Leadership Neshoba Registration

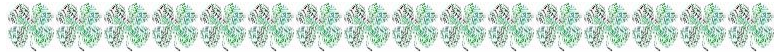
Any high school junior at Philadelphia High School, Neshoba Central, Choctaw High School or Leake Academy may apply to participate in 4-H Leadership Neshoba. Homeschool students can also apply. Applications can be picked up at the school counselor's office, the Chamber of Commerce, or the Extension office in Neshoba County. Only 25 youth are selected – applications are competitive and due by August 31<sup>st</sup>. Leadership sessions are held once a month with students learning effective workplace skills and visiting area businesses. The program begins October 22.



4-H'ers Robby Ellis, Mara Shelton, Madison Alford, and Brice Alford on the beach in Winter Harbor, Maine.

**Brice Alford, Madison Alford, Reese Craft, Robbie Ellis, and Mara Shelton won first place in the state 4H Wildlife Judging Contest. The team and Coach Vicky Shelton represented Mississippi in the national Wildlife Habitat Education Program competition in July. Madison and Mara are heading for college this fall while Brice, Reese, and Robbie can continue to compete in 4-H conservation projects.**

# SEPTEMBER



Sun	Mon	Tues	Wed	Thurs	Fri	Sat
						1 Scott County Invitational Livestock Show Forest, MS
2	3 Labor Day Extension office closed	4	5	6	7	8
9	10	Retinal image steers, market goats, and commercial beef heifers.			14	15 Tylertown State Fall Dairy Show
16	17	18	19	20 Leadership Neshoba Parent Meeting @ the Depot 6:00 p.m.	21 4-H Advisory Council Meeting @ noon	22
23	24	25	26	27	28	29
 <p><b>OCTOBER</b></p>		<p align="center"><b>4-H Junior &amp; Senior Council: October 25<sup>th</sup></b></p> <p>4:00 p.m.      Making "Brookies"</p> <p>5:30 p.m.      Junior Leadership Training</p> <p>6:15 p.m.      Senior Council Meeting</p> <p>7:00 p.m.      Adjourn</p> <p align="center">                     Juniors              Ages 8-13                      Seniors              Ages 14-18                      Volunteers        Ages 21 &amp; up                 </p>				

Sun	Mon	Tues	Wed	Thurs	Fri	Sat
30	1 Mississippi & National 4-H Week →	2	3 Mississippi State Fair Begins	4	5	6 State Fair Junior Market Steer Show Commercial Beef Heifers
7 State Fair Beef Showmanship	8 State Fair Junior Beef Breeding Cattle	9	10	11	12 State Fair Open Dairy Show	13 4-H Day @ State Fair Dairy Cattle Show
14 Mississippi State Fair ends	15	16	17	18	19	20
21	22 Leadership Neshoba	23	24	25 4-H Junior Council - 4 p.m. & Senior Council - 6:15 pm	26	27
28	29	30	31			

COOPERATIVE EXTENSION SERVICE  
U.S. DEPARTMENT OF AGRICULTURE  
Mississippi State University  
P.O. Box 546  
Mississippi State, MS 39762-5446

---

OFFICIAL BUSINESS  
Penalty for private use, \$300

---

RETURN SERVICE REQUESTED

## **EXTENSION NEWS**

### **Farm, Family & 4-H in Neshoba County**

We are an equal opportunity employer, and all qualified applicants will receive consideration for employment without regard to race, color, religion, sex, national origin, disability status, protected veteran status, or any other characteristics protected by law.

MSU Extension will provide reasonable accommodations to persons with disabilities or special needs. Please contact our office (Karen Benson, (601) 656-4011, [k.benson@msstate.edu](mailto:k.benson@msstate.edu)) to a program or event to request reasonable accommodation.